



# SF0903, 0904 SERIES

## SMD Line Filter

### FEATURES

- Low profile very effective in space conscious applications
- Low resistance filters have been designed for excellent electrical isolation
- High quality toroidal core
- Wide frequency range over 1000MHz
- Lead free construction

### OPTIONS

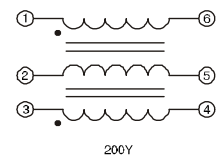
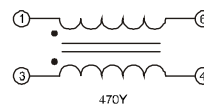
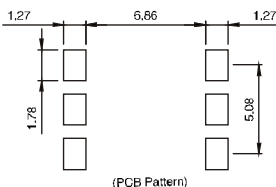
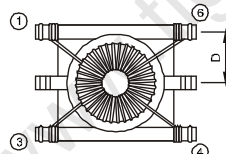
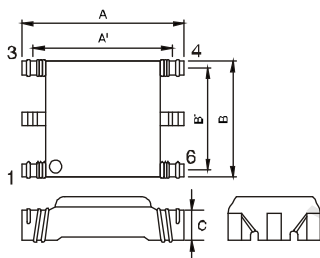
- Tape & Reel is Standard (Qty:1500pcs)
- Bulk packaging Available

### APPLICATIONS

- Provide common mode noise attenuation
- Reduce conducted noise
- For the suppression of EMI in data lines and signal lines, e.g., CAN Bus

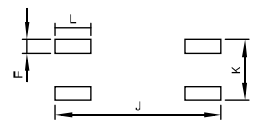
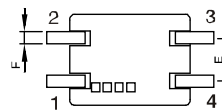
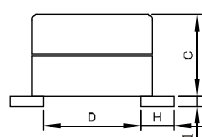
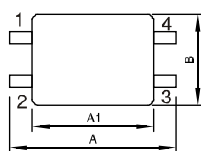
Part Number	L (μH) 100K / 0.1V	L-L (μH) 100K / 0.02V	C (pF) 100K / 0.02V	DCR (Ohm) max.	Turns Ratio	Insertion Loss		Impedance (Z)	
						Freq.	db	Freq.rang	min(Q)
<b>SF0903</b>									
470YAB	47.0 min.	0.18 <sup>+0</sup>	20 <sup>+0</sup>	0.4	1:1	1-100MHz	20 <sup>-0</sup>	10-30MHz	1000
200YAB	20.0 min.	0.10 <sup>+0</sup>	18 <sup>+0</sup>	0.4	1:1:1	30-300MHz	20 <sup>-0</sup>	30-100MHz	800

Part Number	L(1-4) @100KHz, 0.1Vrms (μH)	L-L(1-4) @100KHz,0.1Vrms typ.(2-3 short) max.	DCR (winding) (Ohm) max.	Rated Current Max.	Winding
<b>SF0904</b>					
110YL	11 ±25%	0.050 (μH)	0.120	0.50 A	Bifilar
250YL	25 ± 25%	1.500 (μH)	0.200	0.50 A	Bifilar
510YL	51 ±25%	2.000 (μH)	0.300	0.50 A	Bifilar
471YL	470 ± 25%	0.280 (μH)	0.280	0.50 A	Bifilar
102YL	1000 ± 25%	0.290 (μH)	0.400	0.50 A	Bifilar
472YL	4700 ± 25%	0.300 (μH)	0.700	0.20 A	Bifilar



SF 0903-A SERIES

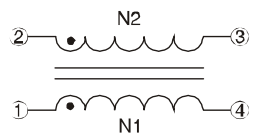
- Materials:
  1. Core: Ferrite Toroidal Core(0903-A), Ferrite Core(0904)
  2. Wire: Enamelled Copper Wire(Class F)
  3. Base: Phenolic(0903-A), PPHS(UL940V-0)(0904)
  4. Terminal: Cu / Ni / Sn (0904)
  5. Adhesive: Epoxy Resin (0904)
  6. Case: PPHS(UL940V-0)(0904)
- General Specification:
  1. Storage Temperature:
    - 40°C - +105°C (0903-A)
    - 40°C - + 135°C (0904)
  2. Operation Temperature:
    - 25°C - + 85°C (0903-A)
    - 40°C - + 135°C (0904)
  3. Temperature Rise Included:
    - 30°C max at Rated Current (0904)
  4. Resistance to solder heat:
    - 260°C, 10 secs.



SF 0904 SERIES

### Dimensions(mm)

Series	A	A1	B	B1	C	D
SF0903	9.20max.	7.24 typ.	6.60 max	5.08 typ.	2.50 max	2.54 typ.



“●”: Polarity

Note:  
All specifications subject to change without notice.

Series	A1	A	B	C	D	E	F	H	I	J	K	L	M
SF0904L	9.20 ± 0.3	7.1 typ.	6.00 ± 0.3	5.00 ± 0.3	5.32 typ.	2.49 typ.	0.60 typ.	1.92 typ.	0.25 typ.	9.60 ref.	3.40 ref.	2.20 ref.	1.00 ref.