



SF0905 SERIES

SMD Line Filter

FEATURES

- Low profile very effective in space conscious applications
- Low resistance filters have been designed for excellent electrical isolation
- High quality toroidal core
- Wide frequency range over 1000MHz
- Lead free construction

OPTIONS

- Tape & Reel is Standard (Qty:1000pcs)
- Bulk packaging Available

APPLICATIONS

- Provide common mode noise attenuation
- Reduce conducted noise
- For the suppression of EMI in data lines and signal lines, e.g., CAN Bus

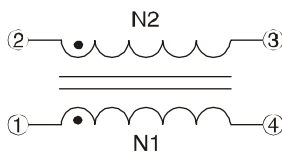
| Part Number | Inductance L1,L2 (μH) | Test Condition | DC Resistance N1,N2(Ohm) | Nominal Voltage VAC | Rated Current (A) | Impedance Ohm | Freq. Range (MHz.) |
|-------------|-----------------------|----------------|--------------------------|---------------------|-------------------|---------------|--------------------|
| SF 0905 | | | | | | | |
| 100YS | 10±30% | 0.1V, 1KHz | 0.080 max. | 50 | 1.60 | 200 min | 20-300 |
| 250YS | 25 ± 30% | 0.1V, 1KHz | 0.160max. | 50 | 1.00 | 600min | 20-150 |
| 400YS | 40 ± 30% | 0.1V,1KHz | 0.250max. | 50 | 0.90 | 800min | 20-100 |
| 500YS | 50 ± 30% | 0.1V, 1KHz | 0.320max. | 50 | 0.80 | 1500min | 20-100 |
| 251YS | 250 ± 50% | 0.1V, 100KHz | 0.130max. | 50 | 1.20 | 600min | 3-20 |
| 471YS | 470 ± 50% | 0.1V, 100KHz | 0.140max. | 50 | 1.10 | 1000min | 2-20 |
| 501YS | 500 ± 50% | 0.1V, 100KHz | 0.150max. | 50 | 1300 | 1000 min | 1-20 |
| 102YS | 1000 ± 50% | 0.1V, 100KHz | 0.310max. | 50 | 0.80 | 1500 min | 1-15 |
| 202YS | 2000 ± 50% | 0.1V, 100KHz | 0.420max. | 50 | 0.60 | 3000 min | 1-5 |
| 472YS | 4700 ± 50% | 0.1V, 100KHz | 0.900max. | 50 | 0.40 | 4000 min | 0.3-3 |
| 652YS | 6500 ± 50% | 0.1V, 100KHz | 1.050max. | 50 | 0.30 | 5000 min | 0.3-2 |

Materials:

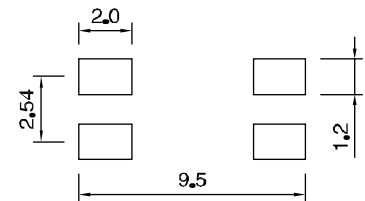
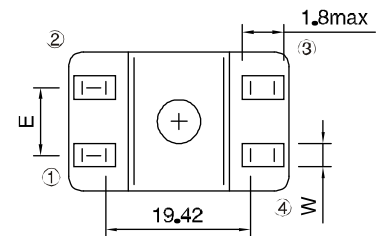
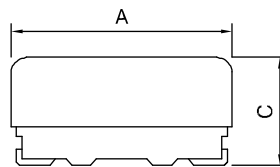
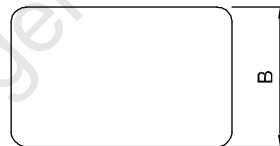
1. Core: Ferrite Toroidal Core
2. Wire: Enamelled Copper Wire
3. Base: LCP
4. Case: LCP
5. Terminal: Tinned Copper Plate

General Specification:

1. Storage Temperature: -40°C - +105°C
2. Operation Temperature: -40°C - +85°C
3. Temperature Rise : 45°C max. at Rated Current
4. Resistance to solder heat: 260°C, 10 secs.



“•”: Polarity



(PCB Pattern)

Dimensions(mm)

| Series | A | B | C | E | F | W |
|---------|------------|-------------|-------------|-------------|-----------|-------------|
| SF 0905 | 9.20 ± 3.0 | 6.00 ± 0.30 | 5.00 ± 0.30 | 2.54 ± 0.20 | 5.70 ref. | 1.00 ± 0.10 |