



# AIRD06A SERIES

## Radial Leaded Power Line Choke

### FEATURES

- High Saturation Material
- Polyolefin Shrink Tube
- Low DC Resistance
- High Rel, Low Cost

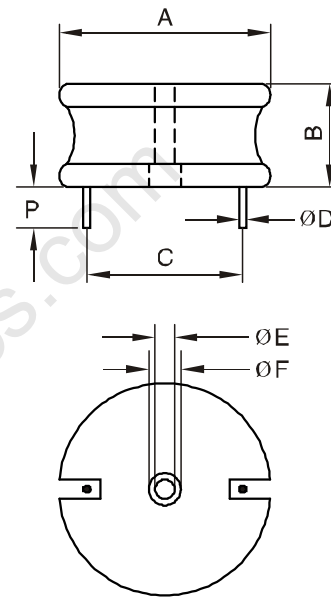
### OPTIONS

- Packaging: T&R Standart 1Kpcs
- Tolerance: 10% is standard
- Lower tolerances available.

### APPLICATIONS

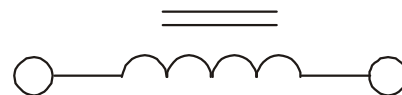
- Switching Regulator
- RFI Suppression Filters
- SCR & TRIAC Controllers
- Automotive
- Power Amplifier
- Power Supply
- Filters

Part Number	L $\mu$ H @1KHz	DCR Ohm max.	IDC A max.	Dim (Inches/mm) C Appr.	Dim (Inches/mm) D nom.
AIRDO6A-2R2M	2.2	0.0021	34.7	1.21/30.73	0.105/2.667
AIRDO6A-3R3M	3.3	0.0026	33.7	1.29/32.77	0.105/2.667
AIRDO6A-5R6M	5.6	0.0036	31	1.29/32.77	0.105/2.667
AIRDO6A-8R2M	8.2	0.0041	30.4	1.29/32.77	0.105/2.667
AIRDO6A-120K	12	0.0047	29.6	1.37/34.80	0.105/2.667
AIRDO6A-150K	15	0.0055	27.6	1.39/35.31	0.094/2.388
AIRDO6A-180K	18	0.0062	25.9	1.37/34.80	0.094/2.388
AIRDO6A-220K	22	0.0068	24.5	1.37/34.80	0.094/2.388
AIRDO6A-270K	27	0.0077	23.3	1.37/34.80	0.094/2.388
AIRDO6A-330K	33	0.0084	22.3	1.37/34.80	0.094/2.388
AIRDO6A-390K	39	0.0112	18.4	1.17/29.72	0.084/2.134
AIRDO6A-470K	47	0.0132	18	1.17/29.72	0.084/2.134
AIRDO6A-560K	56	0.0142	17.5	1.44/36.58	0.075/1.915
AIRDO6A-680K	68	0.018	15.6	1.44/36.58	0.075/1.915
AIRDO6A-820K	82	0.0202	14.8	1.43/36.32	0.075/1.915
AIRDO6A-101K	100	0.0223	14	1.43/36.32	0.075/1.915
AIRDO6A-121K	120	0.0324	11.7	1.44/36.58	0.060/1.524
AIRDO6A-151K	150	0.0368	11	1.44/36.58	0.060/1.524
AIRDO6A-181K	180	0.0468	9.5	1.44/36.58	0.054/1.372
AIRDO6A-221K	220	0.052	9	1.44/36.58	0.054/1.372
AIRDO6A-271K	270	0.0587	8.5	1.46/37.08	0.054/1.372
AIRDO6A-331K	330	0.078	7.8	1.46/37.08	0.054/1.372
AIRDO6A-391K	390	0.0844	7.5	1.45/36.83	0.048/1.219
AIRDO6A-471K	470	0.12	6.5	1.43/36.32	0.048/1.219
AIRDO6A-561K	560	0.131	6.2	1.44/36.58	0.048/1.219
AIRDO6A-681K	680	0.142	6	1.46/37.08	0.048/1.219
AIRDO6A-821K	820	0.187	4.9	1.45/36.83	0.043/1.092
AIRDO6A-102K	1000	0.206	4.7	1.45/36.83	0.043/1.092
AIRDO6A-122K	1200	0.301	3.85	1.45/36.83	0.035/0.889
AIRDO6A-152K	1500	0.353	3.74	1.46/37.08	0.035/0.889
AIRDO6A-182K	1800	0.383	3.43	1.46/37.08	0.035/0.889
AIRDO6A-222K	2200	0.548	2.9	1.45/36.83	0.031/0.787
AIRDO6A-272K	2700	0.793	2.28	1.46/37.08	0.031/0.787
AIRDO6A-332K	3300	0.874	2.15	1.45/36.83	0.031/0.787
AIRDO6A-392K	3900	0.948	2.08	1.46/37.08	0.031/0.787
AIRDO6A-472K	4700	1.24	2	1.46/37.08	0.028/0.711
AIRDO6A-562K	5600	1.4	1.88	1.46/37.08	0.028/0.711
AIRDO6A-682K	6800	1.84	1.8	1.46/37.08	0.028/0.711
AIRDO6A-822K	8200	2.38	1.5	1.47/37.34	0.028/0.711
AIRDO6A-103K	10000	2.75	1.4	1.47/37.34	0.028/0.711



**DIMENSIONS: inches/mm**

A	B	P(min)	ØE	ØF
2.00/50.80	0.74/18.80	0.50/12.70	0.25/6.35	0.375/9.525



The AIRD-05, 06, 07, 08, 04A, 06A, 08A Series of Power Line Choke is available in 367 standard values covering a wide range of inductance and current. The use of high saturation flux density material make these coils ideal for use in switching regulated power supply applications and wherever high current choke values in a small physical size are needed.

- Inductance Testing: HP4284A, HP4285A or equivalent
- RDC: QuadTech 1880 Milliohmeter
- Rated Current: L value drop 10% typ. at  $I_{DC}$  against its initial value
- Temperature rise 40°C Max Reference ambient temperature
- Solderability: 75% of the lead wire shall be covered
- Soldering Methods: Wave, Reflow
- Operating Temperature: -25°C to +85°C
- Storage Temperature: -55°C to +125°C
- Terminal bending strength: 24.5N Min
- Moisture resistance:  $\Delta L/L \leq \pm 10\%$